

Ground floor
PRELIMINARY DESIGN

Van Beverningkstraat 166 - Den Haag

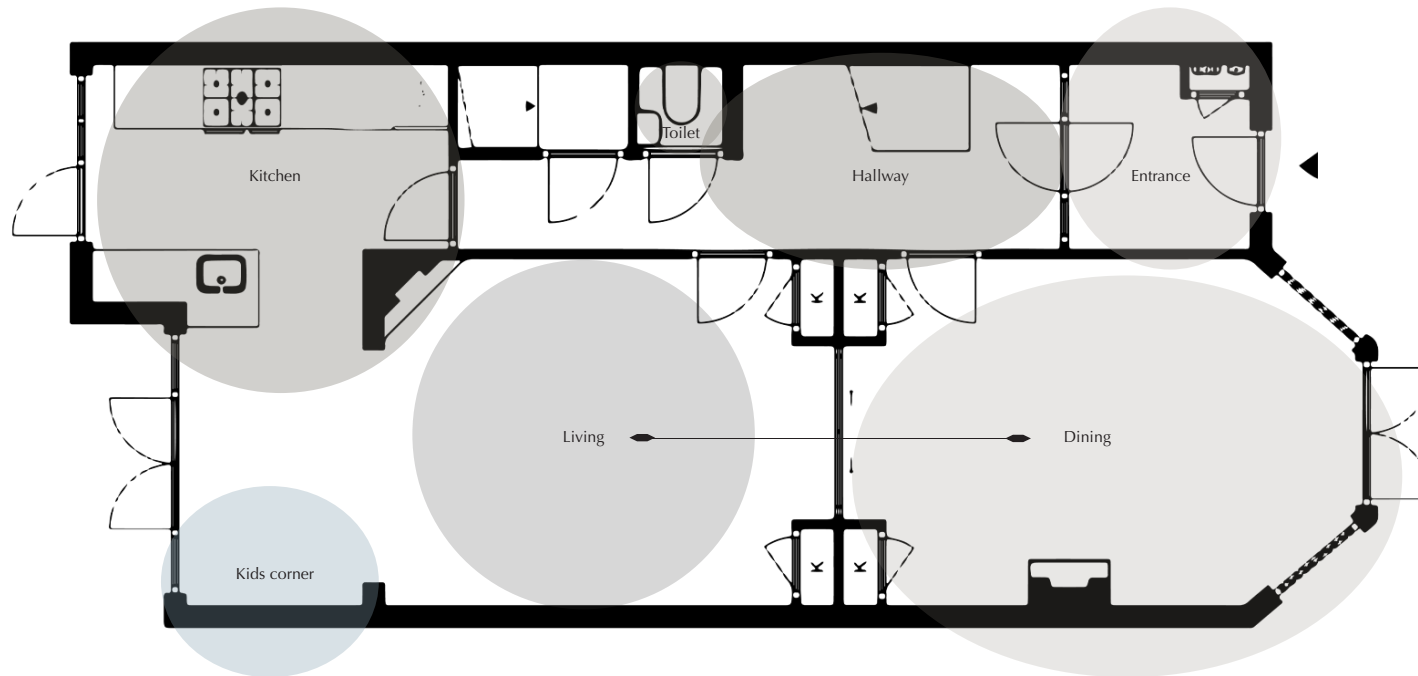
by Studio BAM | 21 july 2023



FLOOR PLAN

Ground floor spot plan

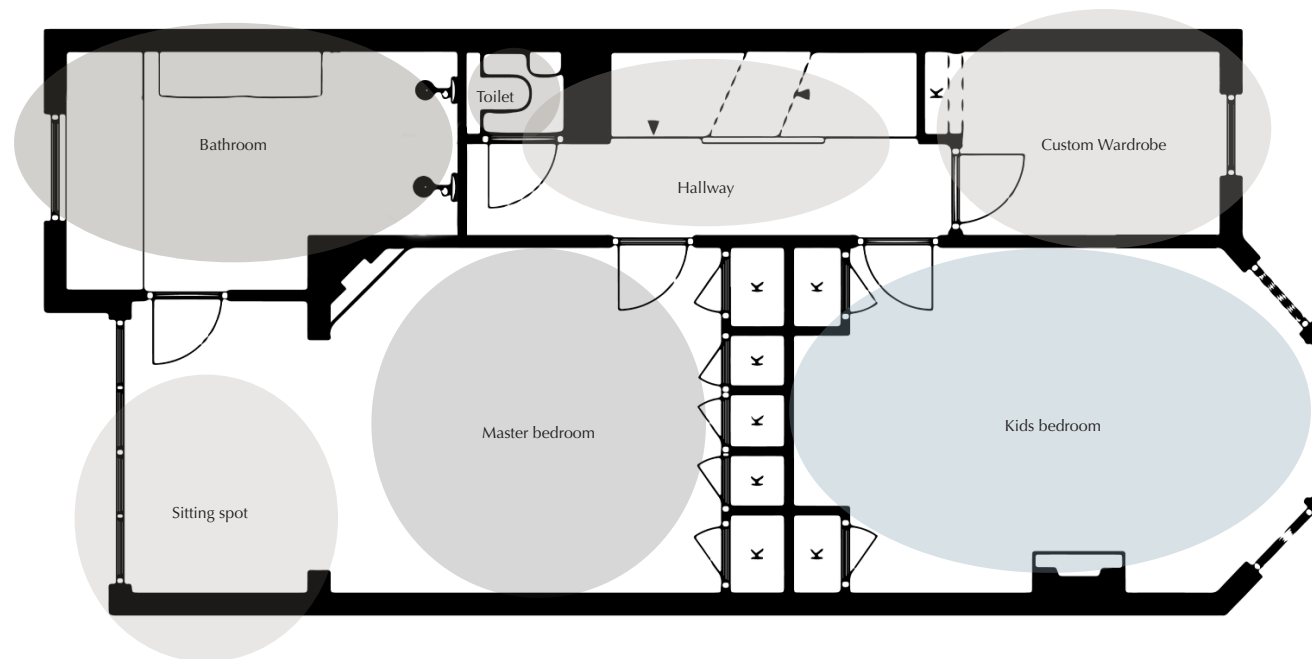
Option 1 / 2



Ground floor
h = 3,24 m

FLOOR PLAN

1nd floor spot plan

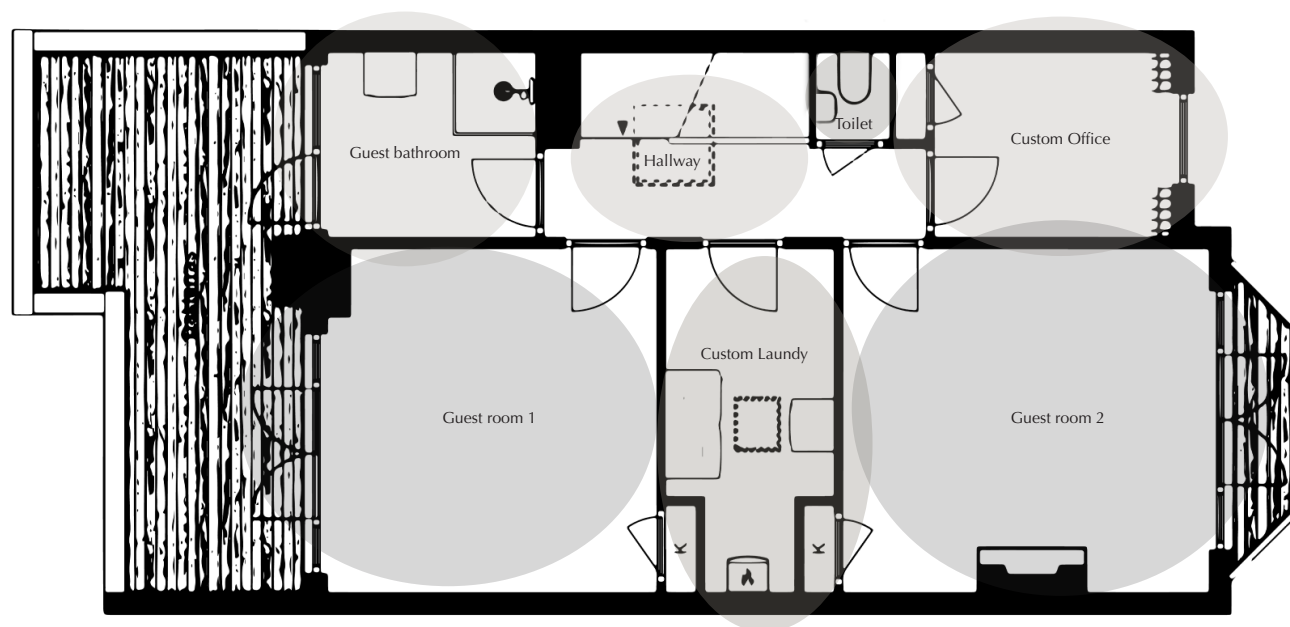


First floor
h = 3,17 m

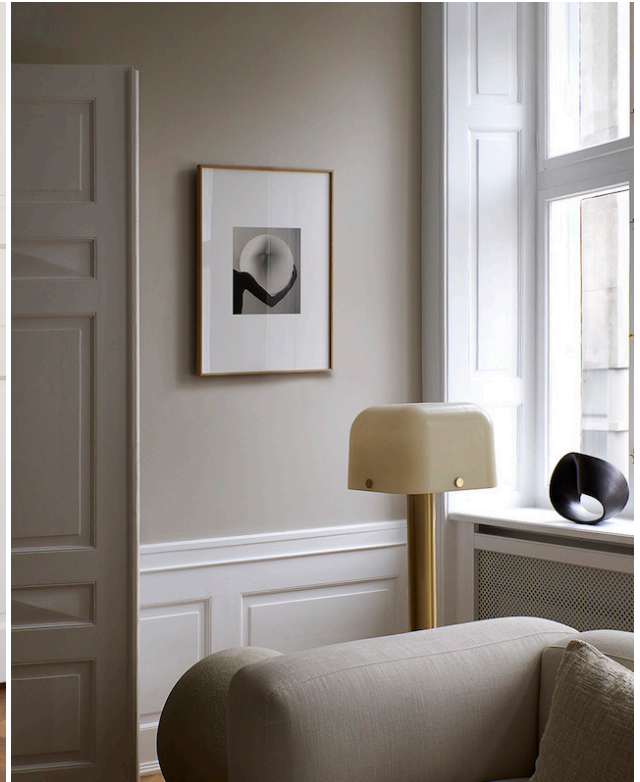
FLOOR PLAN

2nd floor spot plan

Second floor
h = 2,98 m

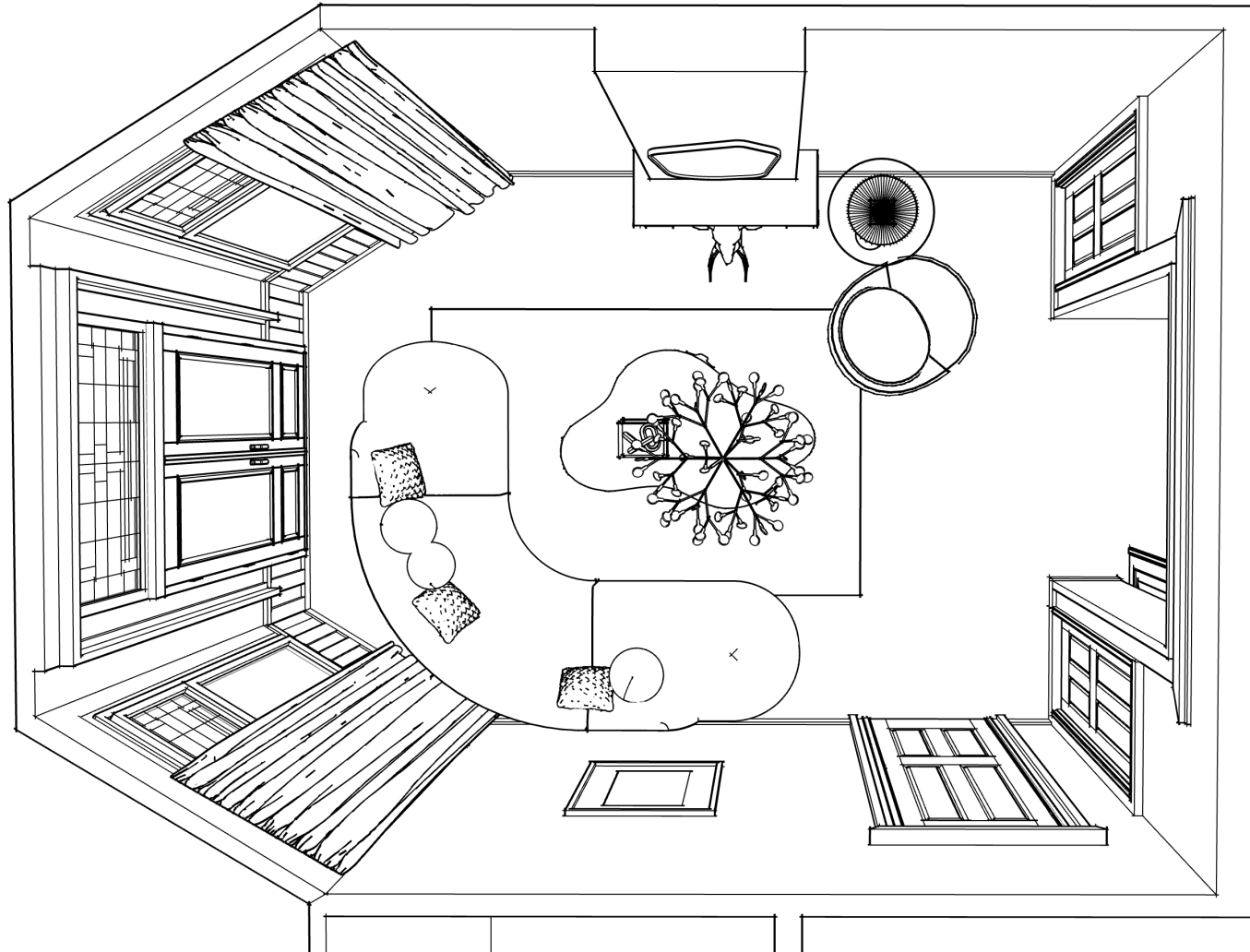


MOOD 1 | LIVING



LIVING

Lay out ground floor | Top view 1 | Light, Clean, Characteristic, Contrast



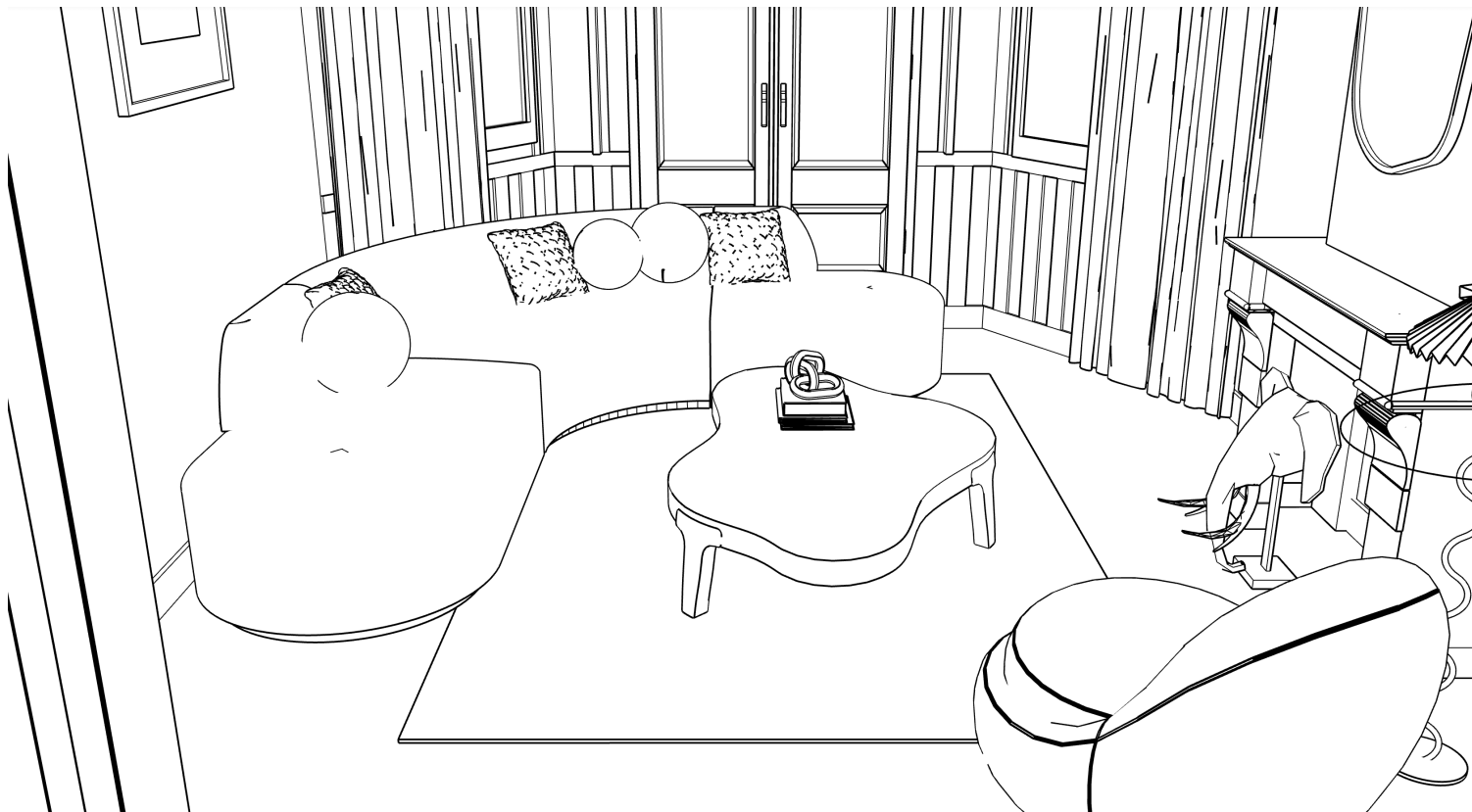
LIVING

Ground floor | Front view 1 | Light, Clean, Characteristic, Contrast



LIVING

Ground floor | Front view 2 | Light, Clean, Characteristic, Contrast



LIVING

Ground floor | Front view 3 | Light, Clean, Characteristic, Contrast

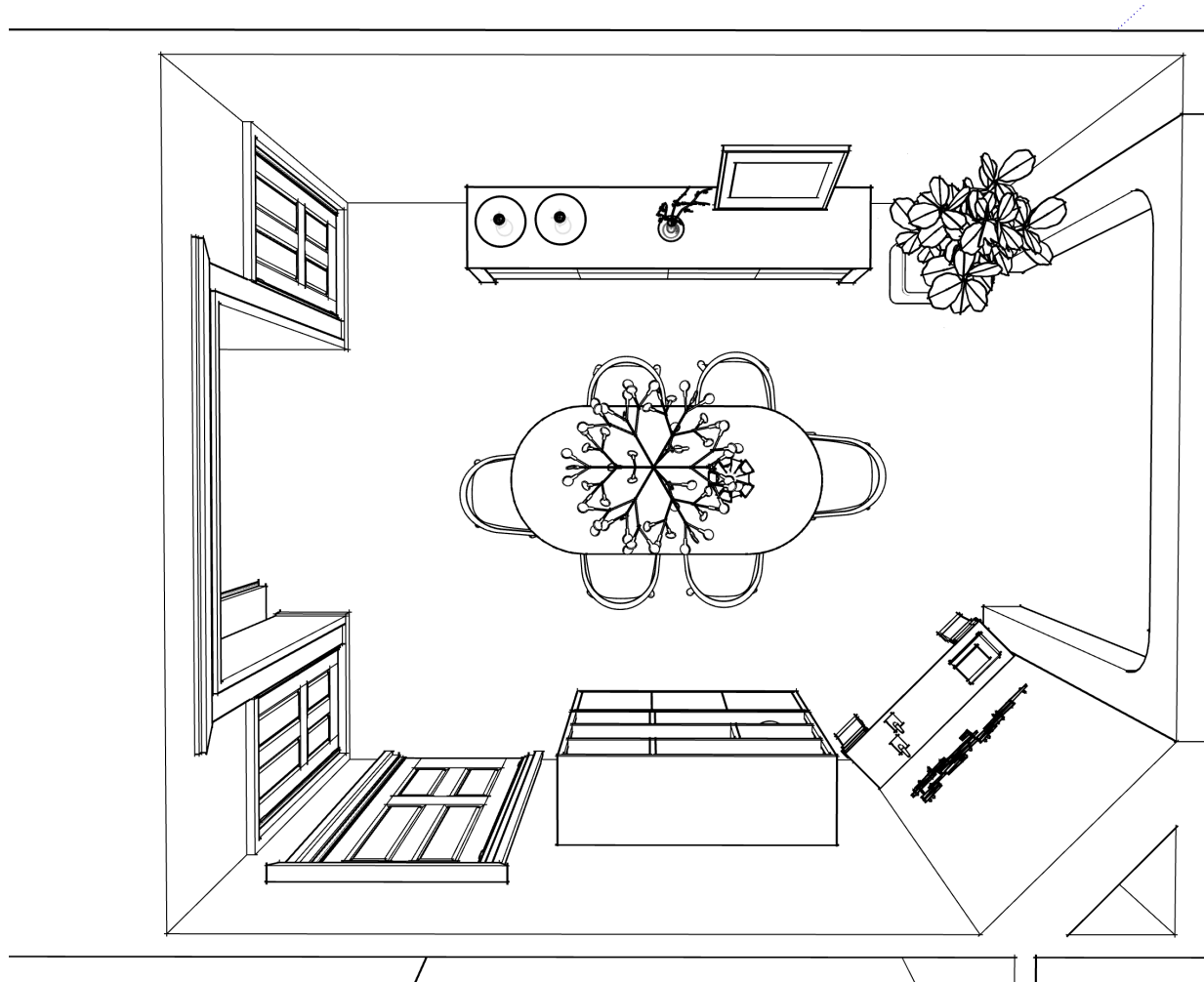


MOOD 2 | DINING



DINING

Lay out ground floor | Top view 2 | Soft, White, Classic, Wood, Chique



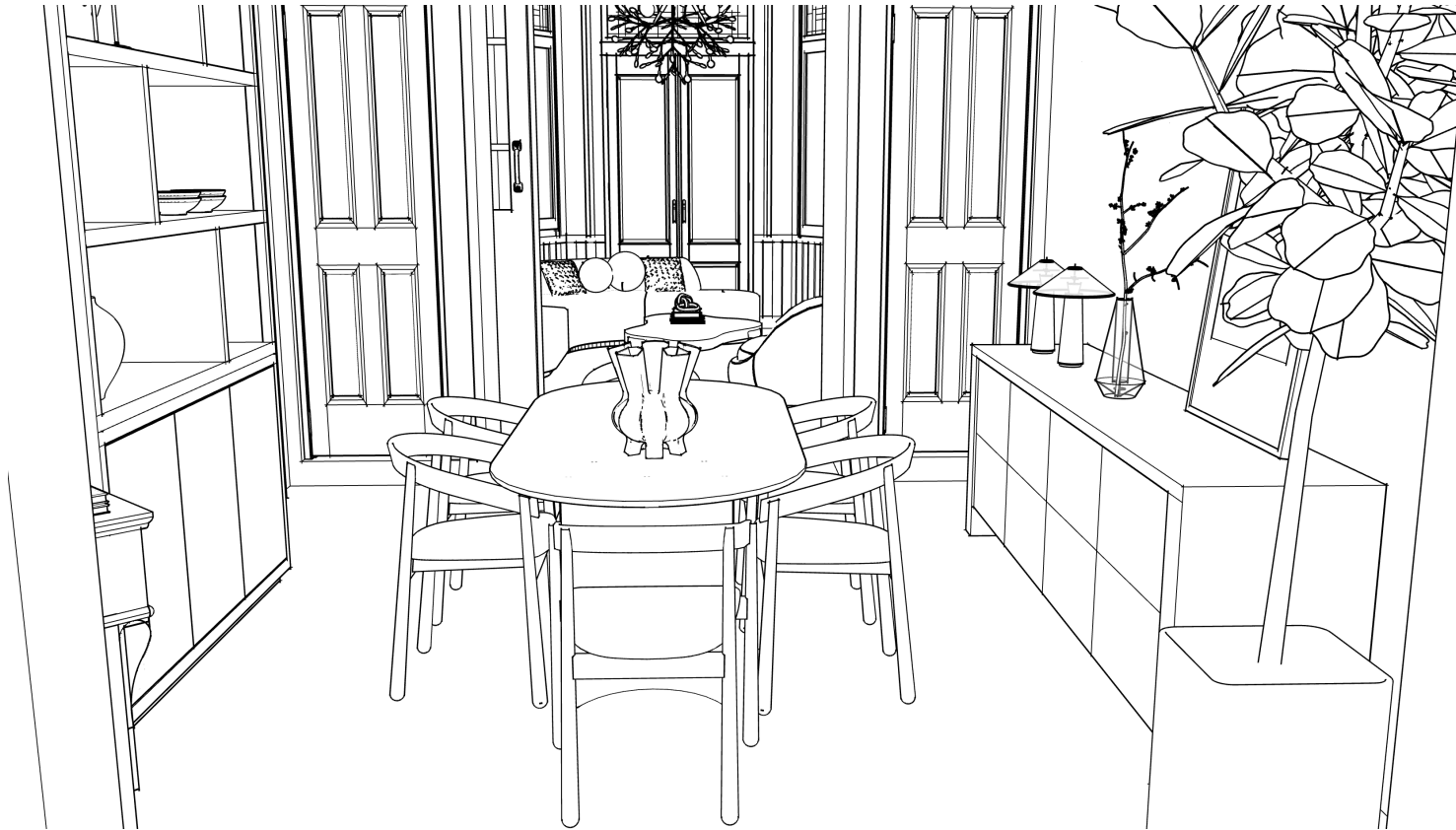
DINING

Ground floor | Front view 2.1 | Soft, White, Classic, Wood, Chique



DINING

Ground floor | Front view 2.2 | Soft, White, Classic, Wood, Chique



DINING

Ground floor | Front view 2.3 | Soft, White, Classic, Wood, Chique



SOFA

Three options | 1. Eicholtz Sofa 2. Hk Living Jax 3. Pols Potten A-Round



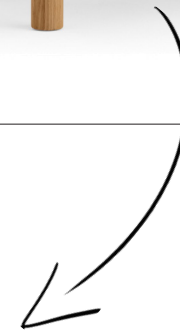
COFFEE TABLE

Three options | 1. Linteloo Isola 2. Table du Sud Dollop 3. Aime Té Form



CHAIR

Three options | 1. The Sofacompany Babette 2. &Tradition Petra 3. Audo Copenhagen Brasilia



It also works well to put two armchairs in front of the window and a straight sofa, instead of the corner sofa.

DRESSOIRS

Three options | 1. SoHome Helsinki 2. Wood Basu 3. Richmond Baccarat



BUFFET CABINET

Three options | 1. Eleonora Helsinki 2. Henders en Hazel Pavie 3. Richmond Oakura



Also option with Black wood.

CEILING LIGHTNING

Three options Dining / Living | 1. Moood Heracleum 2. Gong Benitier Silk 3. Osman Chandelier by Tooy



MOOD 3 | STAIR RUNNER





Studio BAM Interior Design

Kastanjestraat 20
7497 NX, Bentelo
The Netherlands

www.studiobam.nl
t.colijn@gmail.com

+ 31 (0) 6 3614 7223